

Chestnut Lodge at Camp Ken-Jockey

Chestnut Lodge is located in the main camp area of Camp Ken-Jockey. It is a small distance from the Big Darby Creek and the Elam Environmental Center.



Setting

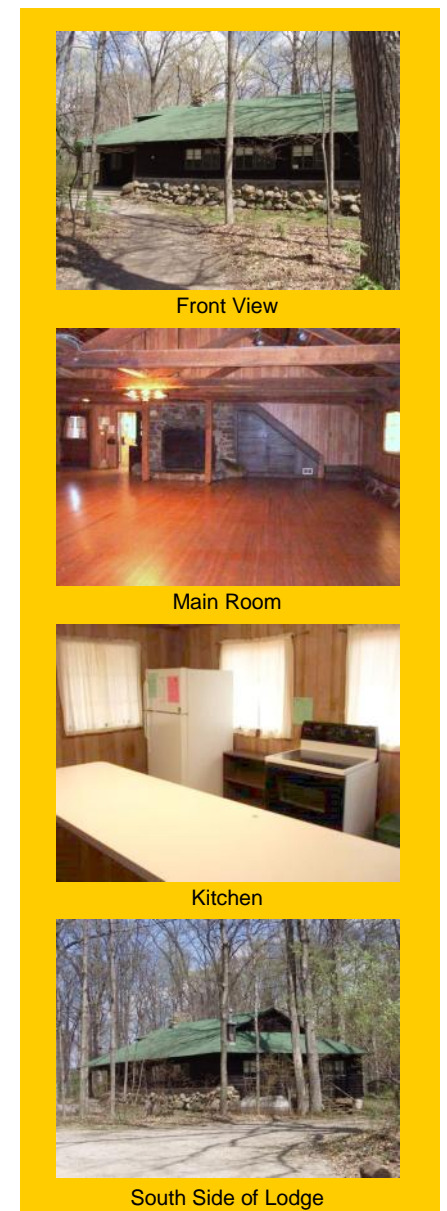
Chestnut Lodge is located in the heart of camp. The area is beautifully wooded and troops can view a great deal of wildlife activity year-round. The back of the lodge overlooks a nearby ravine. Trails in the area lead to the ravine, along the Big Darby Creek, and through the many wooded and prairie areas of camp. Becky's Pond is a short walk away. A fire circle, great for outdoor cooking and troop activities, is across from the front of the lodge.

Site Features and Program Possibilities

On this 220-acre wooded site, there is enough space for activities with other troops also using the site. The Big Darby Creek, a state and national scenic river, is on the western border of camp. Bring your own poles and bait to fish in Becky's Pond. Seasonal canoeing and archery (requires advance registration) also are available. The Elam Environmental Center is located nearby and offers staff-led programs for all ages. Other activities could include nature study, cooking, campfires, flag ceremonies, hiking, crafts, Girl Scout's Own, and mapping.

Lodge Specifications

Availability:	September through May
Capacity:	Up to 30 people may stay overnight
Room Layout:	One large room and separate kitchen (both with stone fireplaces), bathroom
Construction:	Wood-sided lodge, wood floors, paneled walls, incandescent light
Furniture:	Tables, benches and chairs, 30 mattresses for sleeping on floor
Heating/Cooling:	Forced air heat/propane, no air conditioning
Appliances:	Electric stove, oven, and refrigerator
Bathroom:	Two toilets, two sinks, and two showers
Water:	Hot and cold running well water in lodge
Firewood:	Free wood is always available in the forest



Front View

Main Room

Kitchen

South Side of Lodge