

Redbud Cabin at Camp Ken-Jockey

Redbud is a small cabin that is located in the main camp area of Camp Ken-Jockey. It is a small distance from Big Darby Creek, Becky's Pond, and the Elam Environmental Center.



Setting

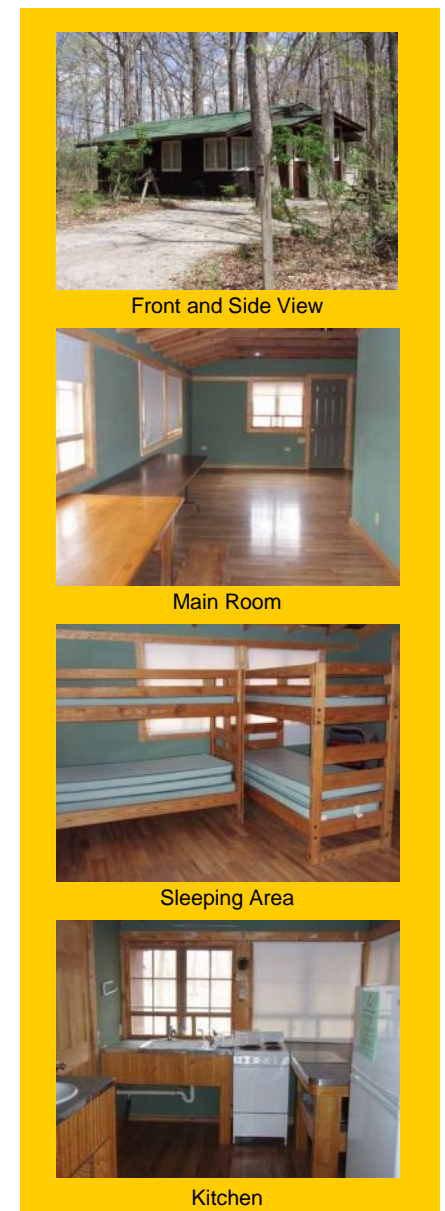
Redbud is located in a lovely wooded setting in the heart of main camp. This cabin is an intimate space and is perfect for small troops. Wildlife activity is common and beautiful wildflowers cover the area in the spring. Trails in the area lead to a nearby ravine and along the Big Darby Creek. Becky's Pond is a short walk away. A small fire circle and picnic bench are located steps from the cabin.

Site Features and Program Possibilities

On this 220-acre wooded site, there is enough space for activities with other troops also using the site. The Big Darby Creek, a state and national scenic river, is on the western border of camp. Bring your own poles and bait to fish in Becky's Pond. Seasonal canoeing and archery (requires advance registration) also are available. The Elam Environmental Center is located nearby and offers staff-led programs for all ages. Other activities could include nature study, cooking, campfires, flag ceremonies, hiking, crafts, Girl Scout's Own, and mapping.

Cabin Specifications

Availability:	Mid-October through mid-April
Capacity:	Up to 8 people may stay overnight
Room Layout:	Small eating area, sleeping area, kitchen
Construction:	Wood-sided cabin, wood floors, drywall walls, incandescent light
Furniture:	Tables, benches, 2 bunk beds and 4 additional mattresses for sleeping on the floor
Heating/Cooling:	Radiant floor heat, no air conditioning
Appliances:	Electric stove, oven, and refrigerator
Bathroom:	2 separate bathrooms, including showers
Water:	Indoor hot and cold running well water
Firewood:	Free wood is always available in the forest



Front and Side View

Main Room

Sleeping Area

Kitchen